



**MIXED-USE OFFICE IN
THE HEART OF
DOWNTOWN ZEBULON**

106 HORTON STREET
ZEBULON, NC 27597

MARIA DINSHAW
919.327.8498
MARIA@CITYPLAT.COM



FOR LEASE

TABLE OF CONTENTS

3	PROPERTY OVERVIEW
4	PHOTOS
7	FLOOR PLAN
8	FINANCIALS
10	AERIAL VIEW
12	LOCATION MAP
14	DEMOGRAPHICS
15	MARKET OVERVIEW

PROPERTY OVERVIEW

1,475 SF

TOTAL SQUARE FEET

\$1,918.65/MO

MONTHLY RENT

NNN

LEASE TYPE

0.69 AC

ACRES

CX

ZONING

MULTI

TENANCY

1914

BUILT

- **Suite 4** - 1,475 SF
- **Prime Location:** Within 25 minutes of Downtown Raleigh and Research Triangle Park, just off US-64/264
- **Versatile Space:** 2-story building with 4 mixed-use retail/office spaces featuring excellent frontage and visibility
- **High Traffic Area:** Situated in a high-traffic zone, ensuring maximum exposure for businesses
- **Proximity to Major Employers:** Close to GlaxoSmithKline, Walmart Super Center, Siemens Energy, and US Food







106

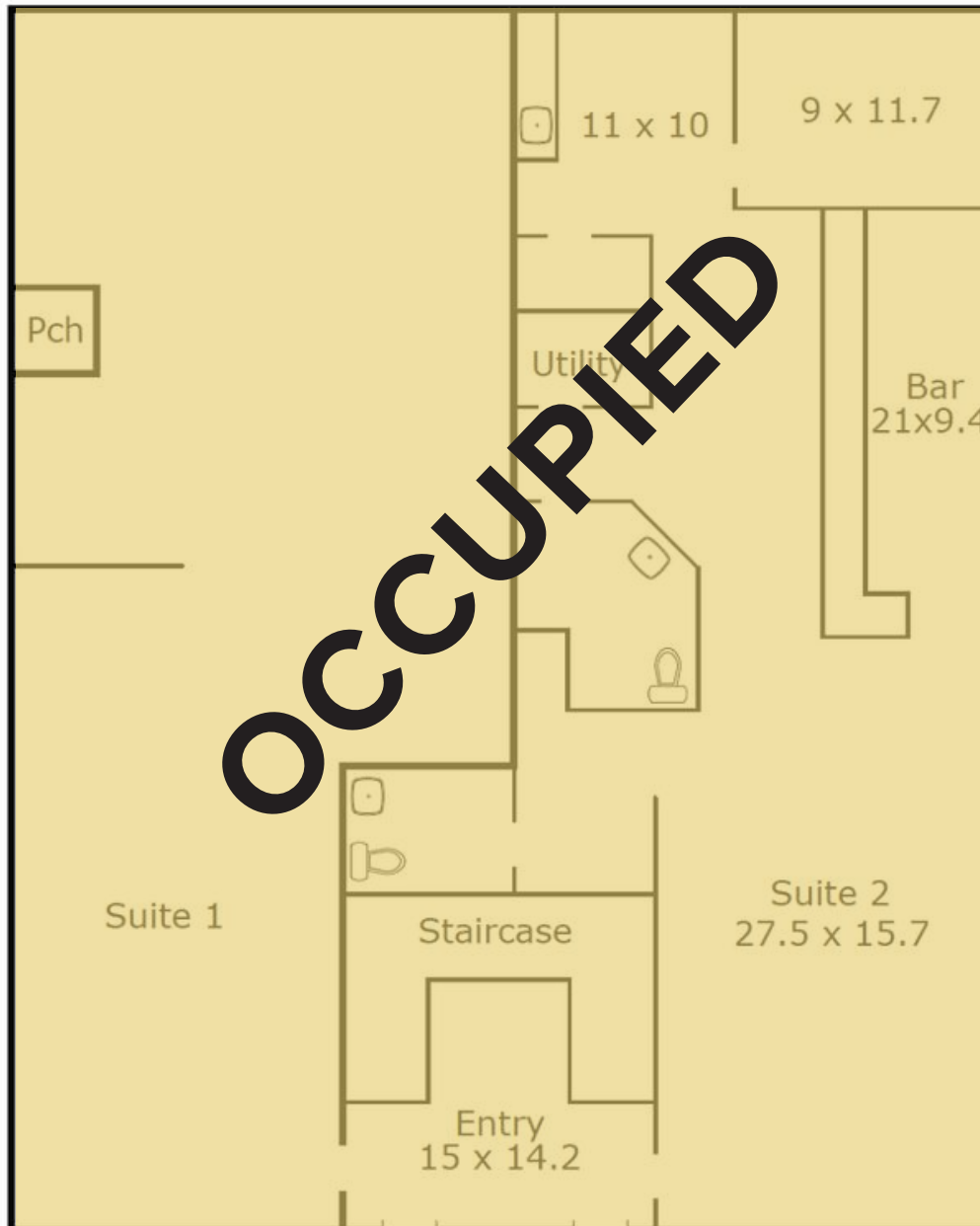
Vintage
Antique Furniture

THE PIANO ROOM

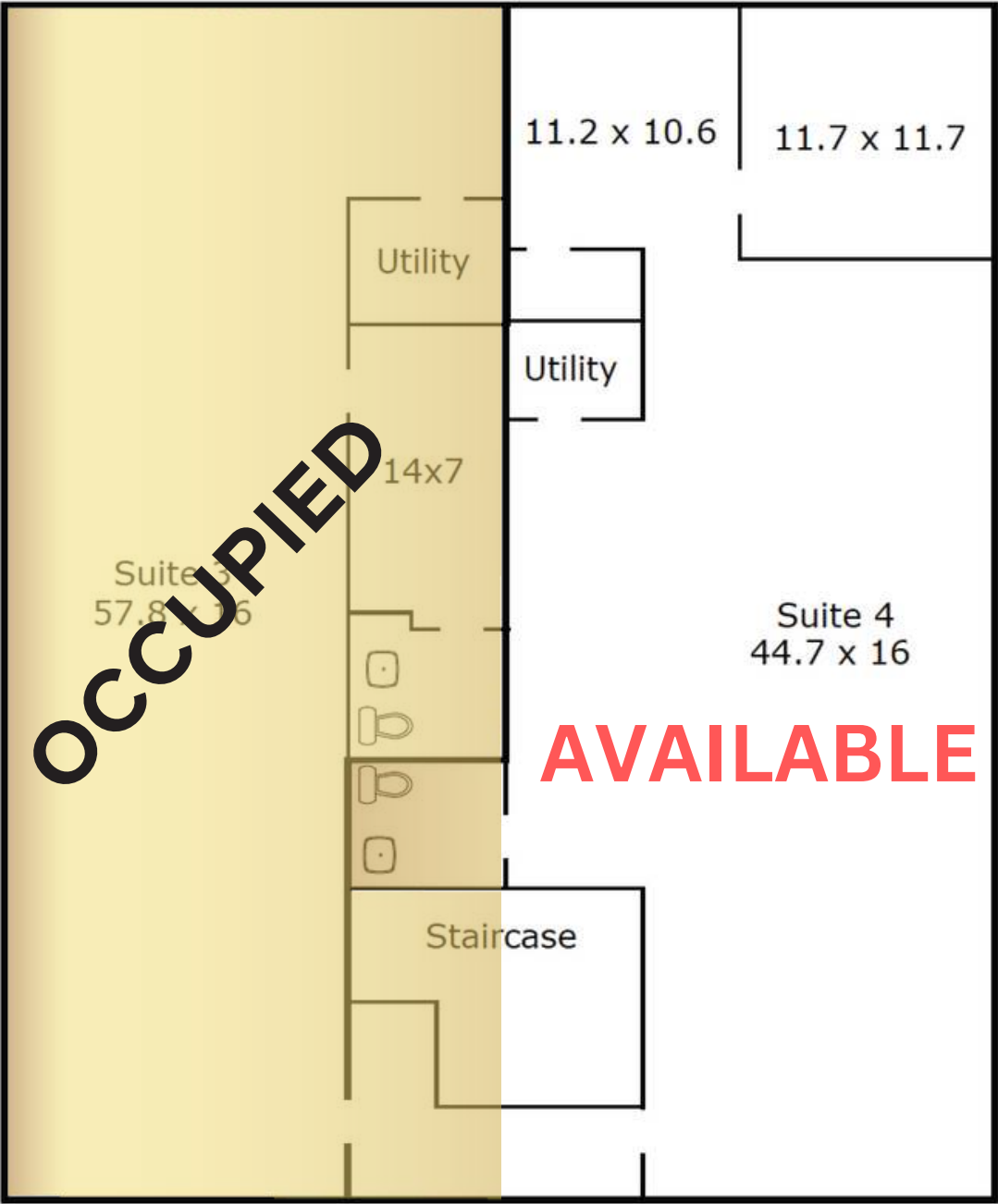
106 W. Horton Street
Zebulon, NC

PIANO LESSONS

FLOOR PLAN FIRST FLOOR LAYOUT



FLOOR PLAN SECOND FLOOR LAYOUT





HORTON ST.



W HORTON ST

4.5 Miles West

SIEMENS ENERGY



Clayco SmithKline



ZEBULON MAGNET MIDDLE SCHOOL



IGA

DOLLAR TREE

BURGER KING

COMPARE FOODS

Hardee's

Advance Auto Parts

FAMILY DOLLAR

FOOD LION

McDonald's

ROSES

belk

Pizza Hut

TACO BELL

Arby's

SOUTHLAND

Smithfield's

CHICKEN 'N HAR-B-O'

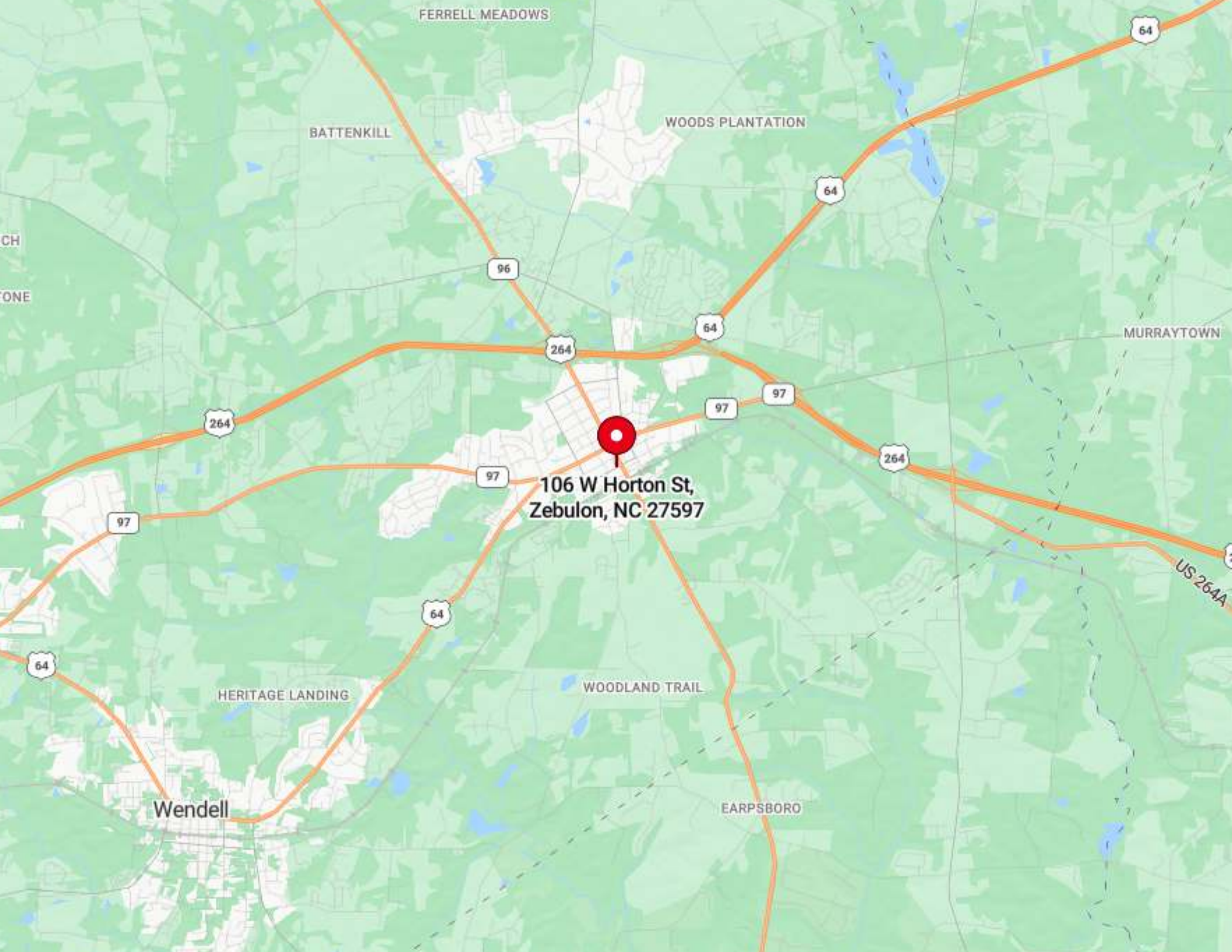
SUBWAY

Walmart

PAPA JOHN'S

3 Miles East

US FOODS



FERRELL MEADOWS

64

BATTENKILL

WOODS PLANTATION

64

96

64

MURRAYTOWN

264

264

97

97

264

97

106 W Horton St,
Zebulon, NC 27597

97

US 264A

64

64

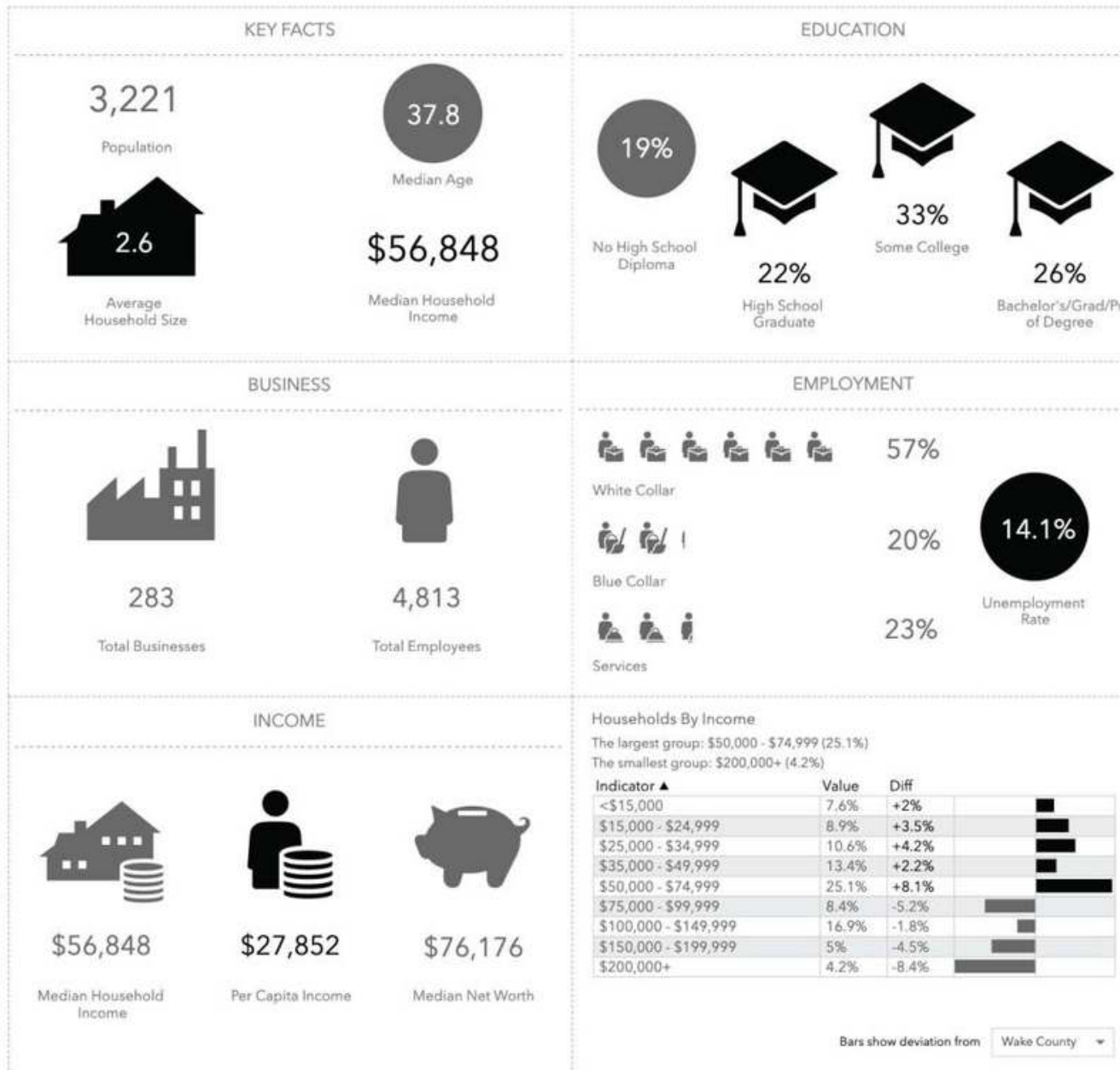
HERITAGE LANDING

WOODLAND TRAIL

Wendell

EARPSBORO

DEMOGRAPHICS



MARKET OVERVIEW

ZEBULON, NC



Zebulon, North Carolina, is a thriving town in Wake County, part of the dynamic Research Triangle metropolitan area. Located just 25 minutes from Downtown Raleigh, Zebulon offers a unique blend of small-town charm and convenient access to urban amenities. Its strategic location near key highways, including US-64/264, makes it an ideal spot for businesses seeking high visibility and easy regional access. The town's proximity to major employers such as GlaxoSmithKline, Walmart Super Center, Siemens Energy, and US Food further enhances its economic appeal.



The area is experiencing significant growth with ongoing residential and commercial developments. This expansion is supported by a robust local economy and a strong sense of community, making Zebulon an attractive place to live and work. Excellent schools, a range of recreational opportunities, and the town's inclusion in the Research Triangle's vibrant economic landscape contribute to its desirability for both residents and businesses.

CONFIDENTIALITY DISCLAIMER

THE INFORMATION CONTAINED IN THIS OFFERING MEMORANDUM IS PROPRIETARY AND STRICTLY CONFIDENTIAL. IT IS INTENDED TO BE REVIEWED ONLY BY THE PARTY(IES) RECEIVING IT FROM CITYPLAT, LLC AND SHOULD NOT BE MADE AVAILABLE TO ANY OTHER PERSON OR ENTITY WITHOUT THE WRITTEN CONSENT OF CITYPLAT, LLC. IF YOU ARE NOT THE INTENDED RECIPIENT, YOU ARE HEREBY NOTIFIED THAT ANY RETENTION, DISSEMINATION, DUPLICATION, FORWARDING, COPYING OR TAKING ANY ACTION IN RELIANCE ON THE CONTENTS OF THIS INFORMATION IS STRICTLY PROHIBITED. IF YOU RECEIVE THIS OFFERING MEMORANDUM IN ERROR, WHETHER IN ELECTRONIC OR PRINTED FORM, PLEASE NOTIFY THE SENDER AND DESTROY THE DOCUMENT.

THIS OFFERING HAS BEEN PREPARED TO PROVIDE A SUMMARY OF UNVERIFIED INFORMATION TO PROSPECTIVE PURCHASERS, AND TO ESTABLISH ONLY A PRELIMINARY LEVEL OF INTEREST IN THE SUBJECT PROPERTY. THE INFORMATION CONTAINED HEREIN IS NOT A SUBSTITUTE FOR A THOROUGH DUE DILIGENCE INVESTIGATION.

CITYPLAT, LLC HAS NOT MADE ANY INVESTIGATION, AND MAKES NO WARRANTY OR REPRESENTATION, WITH RESPECT TO THE INCOME OR EXPENSES FOR THE SUBJECT PROPERTY, THE FUTURE PROJECTED FINANCIAL PERFORMANCE OF THE PROPERTY, THE SIZE AND SQUARE FOOTAGE OF THE PROPERTY AND IMPROVEMENTS, THE PRESENCE OR ABSENCE OF CONTAMINATING SUBSTANCES, PCB'S OR ASBESTOS, THE COMPLIANCE WITH STATE AND FEDERAL REGULATIONS, THE PHYSICAL CONDITION OF THE IMPROVEMENTS THEREON, OR THE FINANCIAL CONDITION OR BUSINESS PROSPECTS OF ANY TENANT, OR ANY TENANT'S PLANS OR INTENTIONS TO CONTINUE ITS OCCUPANCY OF THE SUBJECT PROPERTY.

THE INFORMATION CONTAINED IN THIS OFFERING HAS BEEN OBTAINED FROM SOURCES WE BELIEVE ARE RELIABLE; HOWEVER, CITYPLAT, LLC HAS NOT VERIFIED, AND WILL NOT VERIFY, ANY OF THE INFORMATION CONTAINED HEREIN, NOR HAS CITYPLAT, LLC CONDUCTED ANY INVESTIGATION REGARDING THESE MATTERS AND MAKES NO WARRANTY OR REPRESENTATION WHATSOEVER REGARDING THE ACCURACY OR COMPLETENESS OF THE INFORMATION PROVIDED.

