



LAYDOWN YARD LOCATED  
IN HIGH POINT JUST OFF I-74

312 NEW STREET  
HIGH POINT, NC 27260

312 New St

SAM KEEFER  
919.780.7508  
SAM@CITYPLAT.COM

MARIA DINSHAW  
919.327.8498  
MARIA@CITYPLAT.COM

CITYPLAT  
COMMERCIAL REAL ESTATE

# TABLE OF CONTENTS

- 3 PROPERTY OVERVIEW**
- 4 AERIALS**
- 6 SITE PLAN**
- 7 LOCATION MAP**
- 8 MARKET OVERVIEW**

# PROPERTY DASHBOARD

---

**\$1,250 / MONTH**  
**MONTHLY RENT**

**0.68 AC**  
**TOTAL ACRES**

**STORAGE**  
**USE**

**SINGLE**  
**TENANCY**

## **PRIME LOCATION**

- Strategically located in High Point with easy access to major highways (I-85 and I-40), facilitating efficient transportation of materials and equipment.
- Close proximity to industrial areas, manufacturing centers, and construction sites.

## **SPACIOUS YARD**

- Expansive outdoor storage space totaling 30,000 square feet, suitable for storing large equipment, construction materials, and machinery.
- Flexible layout options available to accommodate various storage needs.

## **SECURE AND WELL-MAINTAINED:**

- Regular maintenance and upkeep of grounds for cleanliness and operational efficiency.





 DOWNTOWN  
HIGH POINT

  
HIGH POINT  
UNIVERSITY

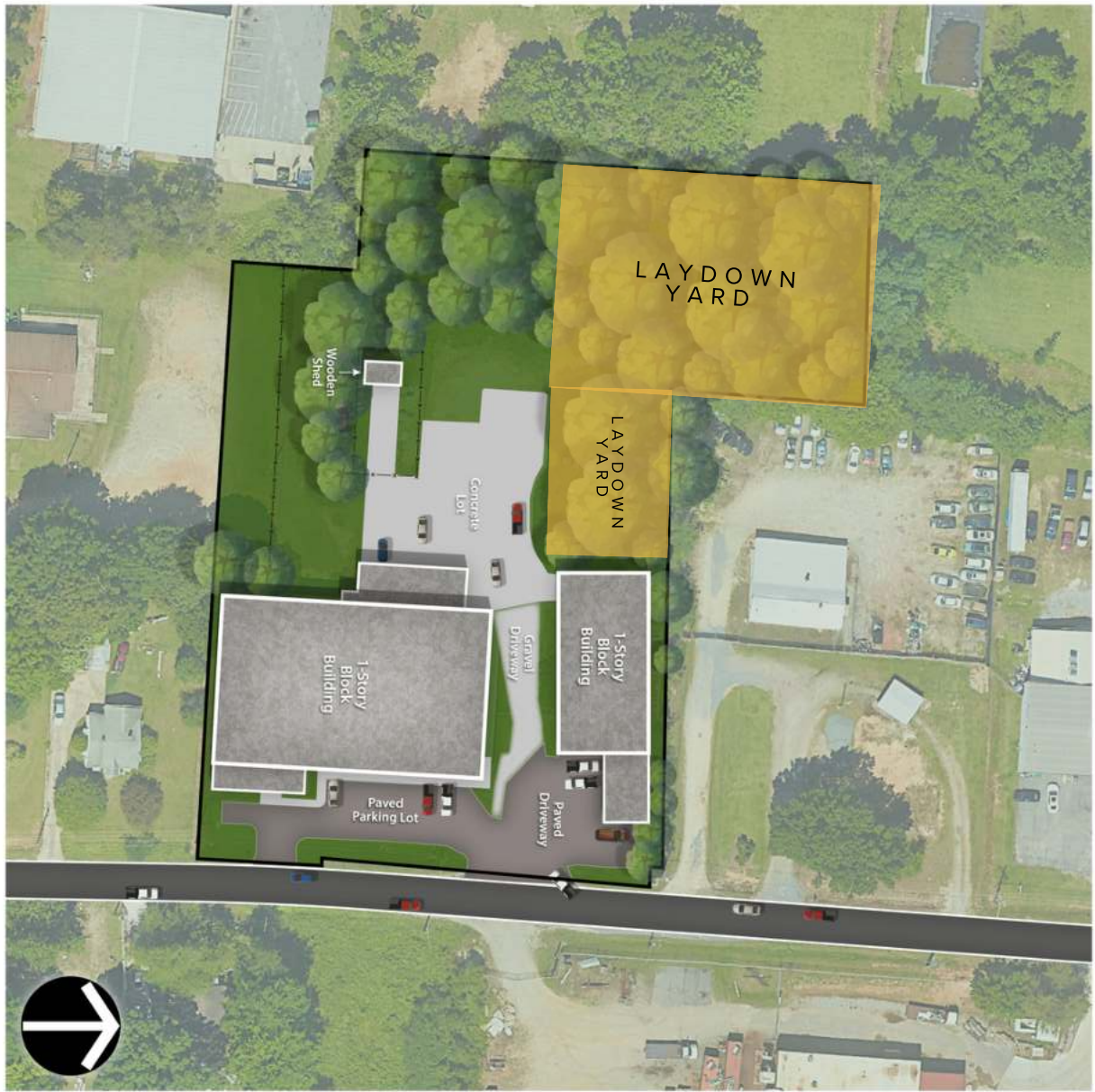
LAYDOWN YARD

317 NEW ST.

312 NEW ST.



# SITE PLAN

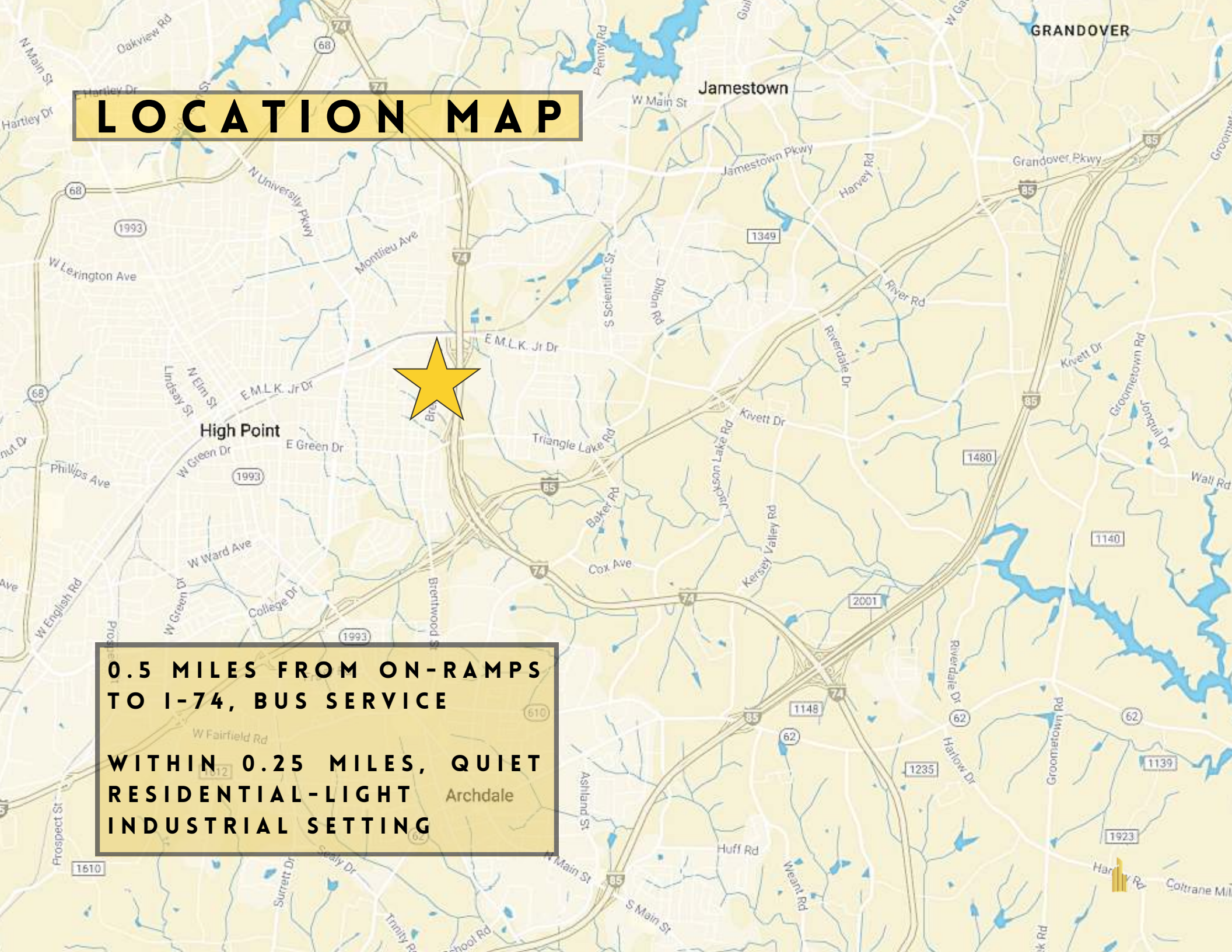


# LOCATION MAP



**0.5 MILES FROM ON-RAMPS  
TO I-74, BUS SERVICE**

**WITHIN 0.25 MILES, QUIET  
RESIDENTIAL-LIGHT  
INDUSTRIAL SETTING**



# MARKET OVERVIEW

## HIGH POINT, NC

---



HIGH POINT IS A CITY LOCATED IN THE PIEDMONT TRIAD REGION OF NORTH CAROLINA, IN THE UNITED STATES. IT HAS A POPULATION OF APPROXIMATELY 111,000 PEOPLE, MAKING IT THE NINTH-LARGEST MUNICIPALITY IN THE STATE. HIGH POINT IS KNOWN FOR ITS FURNITURE INDUSTRY AND IS OFTEN REFERRED TO AS THE "FURNITURE CAPITAL OF THE WORLD". THE CITY HOSTS THE ANNUAL HIGH POINT MARKET, WHICH IS THE LARGEST FURNISHINGS INDUSTRY TRADE SHOW IN THE WORLD. IN ADDITION TO ITS FURNITURE INDUSTRY, HIGH POINT IS ALSO HOME TO SEVERAL COLLEGES AND UNIVERSITIES, INCLUDING HIGH POINT UNIVERSITY, WHICH IS A PRIVATE LIBERAL ARTS UNIVERSITY WITH AN ENROLLMENT OF OVER 5,000 STUDENTS. THE CITY HAS A NUMBER OF PARKS AND RECREATIONAL FACILITIES, INCLUDING OAK HOLLOW LAKE, WHICH IS A POPULAR DESTINATION FOR FISHING, BOATING, AND OTHER OUTDOOR ACTIVITIES. HIGH POINT IS LOCATED IN GUILFORD COUNTY AND IS APPROXIMATELY 75 MILES WEST OF RALEIGH, THE STATE CAPITAL. THE CITY IS EASILY ACCESSIBLE VIA SEVERAL MAJOR HIGHWAYS, INCLUDING I-40, I-74, AND US-311.



# CONFIDENTIALITY DISCLAIMER

THE INFORMATION CONTAINED IN THIS OFFERING MEMORANDUM IS PROPRIETARY AND STRICTLY CONFIDENTIAL. IT IS INTENDED TO BE REVIEWED ONLY BY THE PARTY(IES) RECEIVING IT FROM CITYPLAT, LLC AND SHOULD NOT BE MADE AVAILABLE TO ANY OTHER PERSON OR ENTITY WITHOUT THE WRITTEN CONSENT OF CITYPLAT, LLC. IF YOU ARE NOT THE INTENDED RECIPIENT, YOU ARE HEREBY NOTIFIED THAT ANY RETENTION, DISSEMINATION, DUPLICATION, FORWARDING, COPYING OR TAKING ANY ACTION IN RELIANCE ON THE CONTENTS OF THIS INFORMATION IS STRICTLY PROHIBITED. IF YOU RECEIVE THIS OFFERING MEMORANDUM IN ERROR, WHETHER IN ELECTRONIC OR PRINTED FORM, PLEASE NOTIFY THE SENDER AND DESTROY THE DOCUMENT.

THIS OFFERING HAS BEEN PREPARED TO PROVIDE A SUMMARY OF UNVERIFIED INFORMATION TO PROSPECTIVE PURCHASERS, AND TO ESTABLISH ONLY A PRELIMINARY LEVEL OF INTEREST IN THE SUBJECT PROPERTY. THE INFORMATION CONTAINED HEREIN IS NOT A SUBSTITUTE FOR A THOROUGH DUE DILIGENCE INVESTIGATION.

CITYPLAT, LLC HAS NOT MADE ANY INVESTIGATION, AND MAKES NO WARRANTY OR REPRESENTATION, WITH RESPECT TO THE INCOME OR EXPENSES FOR THE SUBJECT PROPERTY, THE FUTURE PROJECTED FINANCIAL PERFORMANCE OF THE PROPERTY, THE SIZE AND SQUARE FOOTAGE OF THE PROPERTY AND IMPROVEMENTS, THE PRESENCE OR ABSENCE OF CONTAMINATING SUBSTANCES, PCB'S OR ASBESTOS, THE COMPLIANCE WITH STATE AND FEDERAL REGULATIONS, THE PHYSICAL CONDITION OF THE IMPROVEMENTS THEREON, OR THE FINANCIAL CONDITION OR BUSINESS PROSPECTS OF ANY TENANT, OR ANY TENANT'S PLANS OR INTENTIONS TO CONTINUE ITS OCCUPANCY OF THE SUBJECT PROPERTY.

THE INFORMATION CONTAINED IN THIS OFFERING HAS BEEN OBTAINED FROM SOURCES WE BELIEVE ARE RELIABLE; HOWEVER, CITYPLAT, LLC HAS NOT VERIFIED, AND WILL NOT VERIFY, ANY OF THE INFORMATION CONTAINED HEREIN, NOR HAS CITYPLAT, LLC CONDUCTED ANY INVESTIGATION REGARDING THESE MATTERS AND MAKES NO WARRANTY OR REPRESENTATION WHATSOEVER REGARDING THE ACCURACY OR COMPLETENESS OF THE INFORMATION PROVIDED.

