

# PRIME FLEX/INDUSTRIAL WAREHOUSE WITH FENCED-IN LAYDOWN AREA

1129 E Geer St, Durham, NC 27704



**NICK MELFI**

908.255.9698

[nick@cityplat.com](mailto:nick@cityplat.com)

**CITYPLAT**  
COMMERCIAL REAL ESTATE



# TABLE OF CONTENT

---

3. Property Dashboard

9. Floor Plan

10. Location Map

11. Overview Map

12. Market Overview

13. Parcel Map

14. Demographics



# PROPERTY DASHBOARD

+/- 8,200 SF

Total Available SF

Contact Broker

Lease Rate

NNN

Lease Type

Industrial

Property Type

1969

Year Built

## DEMOGRAPHICS

	3-MILE	5-MILE	10-MILE
2024 POPULATION	85,250	180,772	392,966
2024 AVERAGE HOUSEHOLD INCOME	\$73,881	\$79,750	\$100,524

## KEY AMENITIES

- Easy access to 3 major thoroughfares
- Fully Sprinkled
- 5 drive-in doors
- Fenced in laydown yard
- Mezzanine in warehouse
- 17' peak ceiling height
- 3 Phase Power
- Ample parking on-site
- +/- 1,500 SF of office space [Landlord open to refreshing / renovating]

## PROPERTY HIGHLIGHTS

This versatile +/- 8,200sf flex/industrial warehouse in Durham's high-traffic industrial corridor offers IL zoning, allowing a wide range of manufacturing, distribution, and industrial uses. Positioned with convenient access to I-85, US-70 and I-885 the property features high ceilings, sprinkled warehouse, multiple roll-up doors and dedicated fenced in laydown area. Located in a well-established industrial submarket, this site presents a strong leasing opportunity for users seeking functional space for automotive users, logistics, manufacturing, contractors, and service-based businesses.























NOTICE  
EMPLOYEES  
ONLY

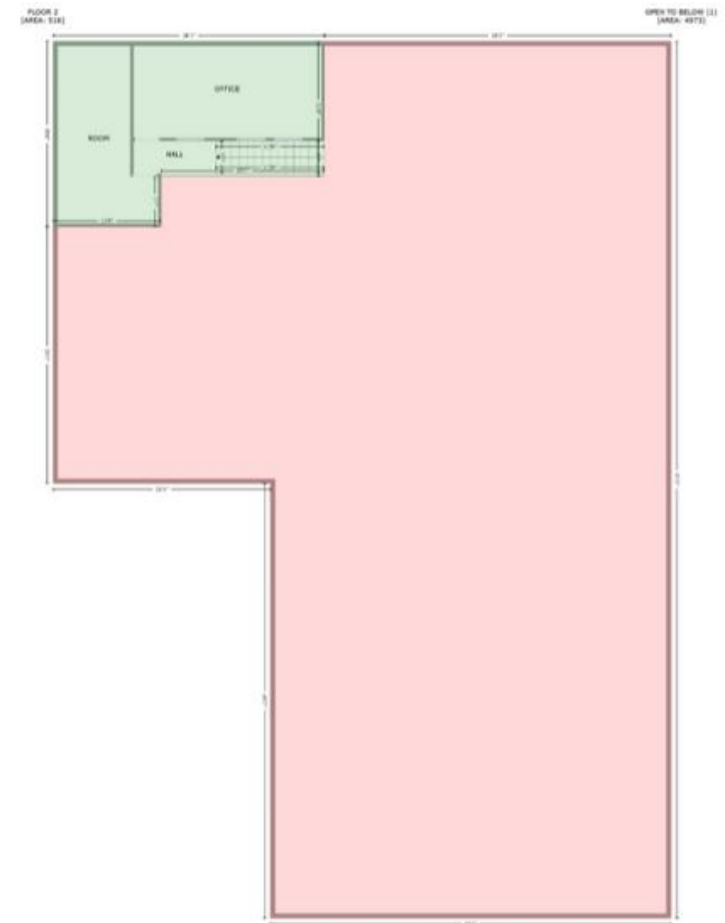
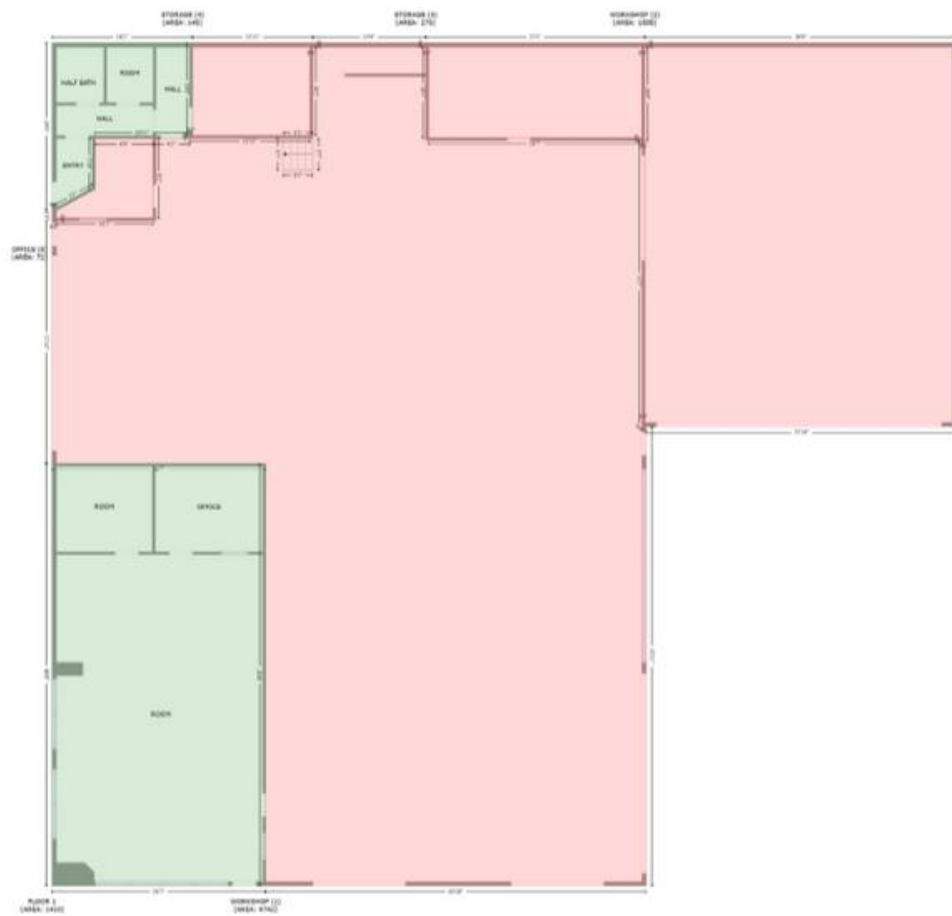






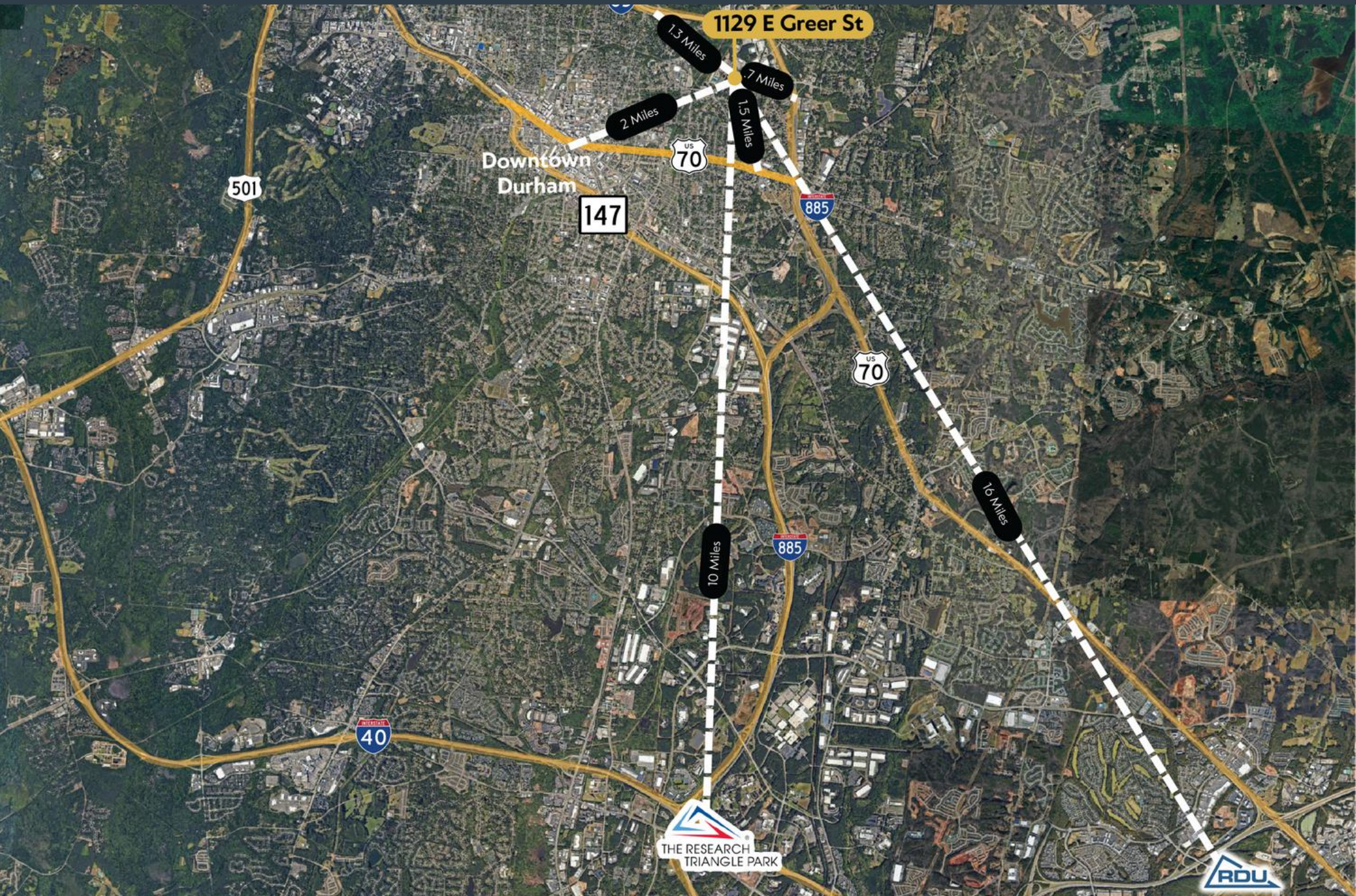
# FLOOR PLAN

1129 E GEER ST



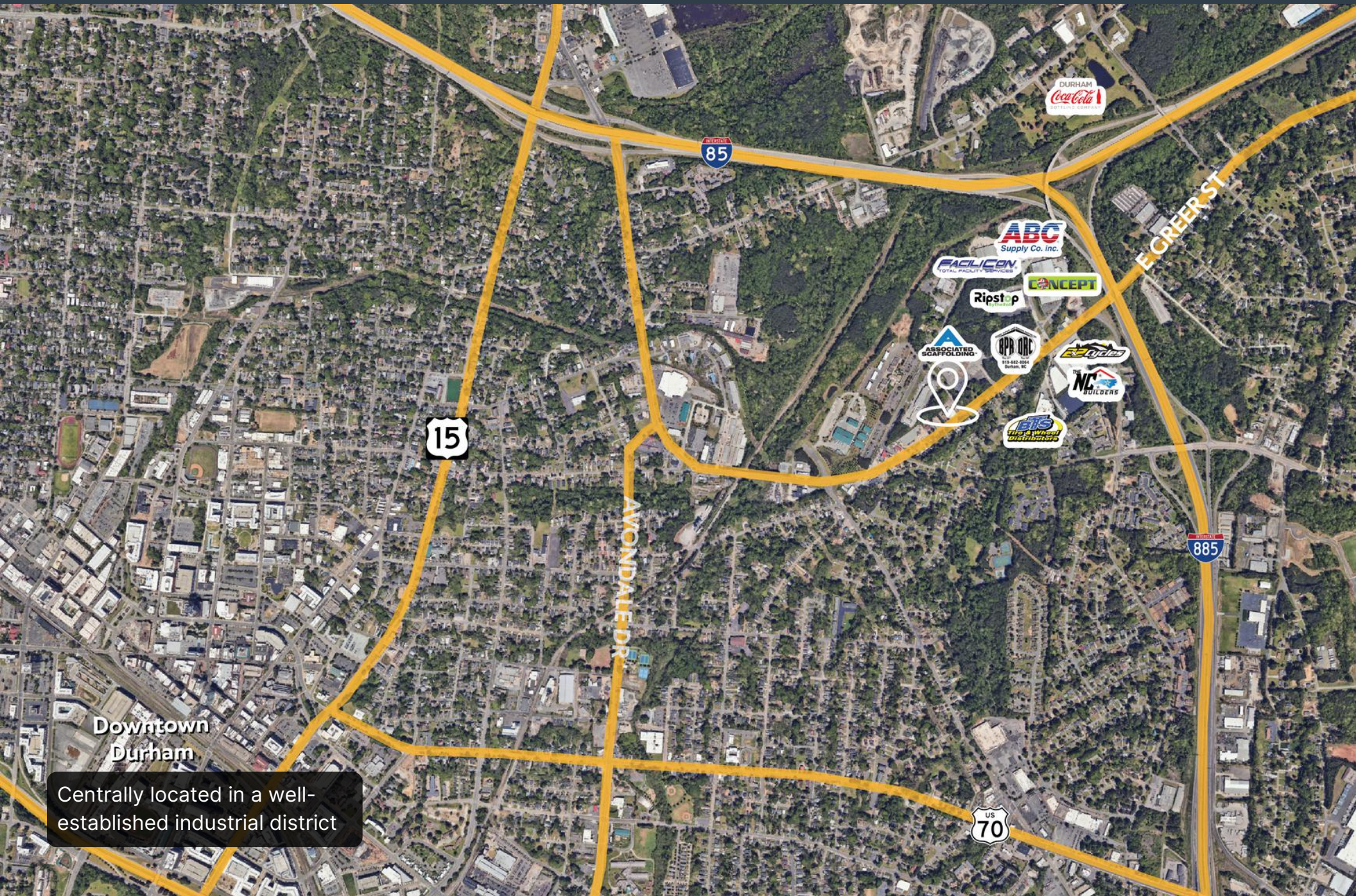


# LOCATION MAP





# OVERVIEW MAP

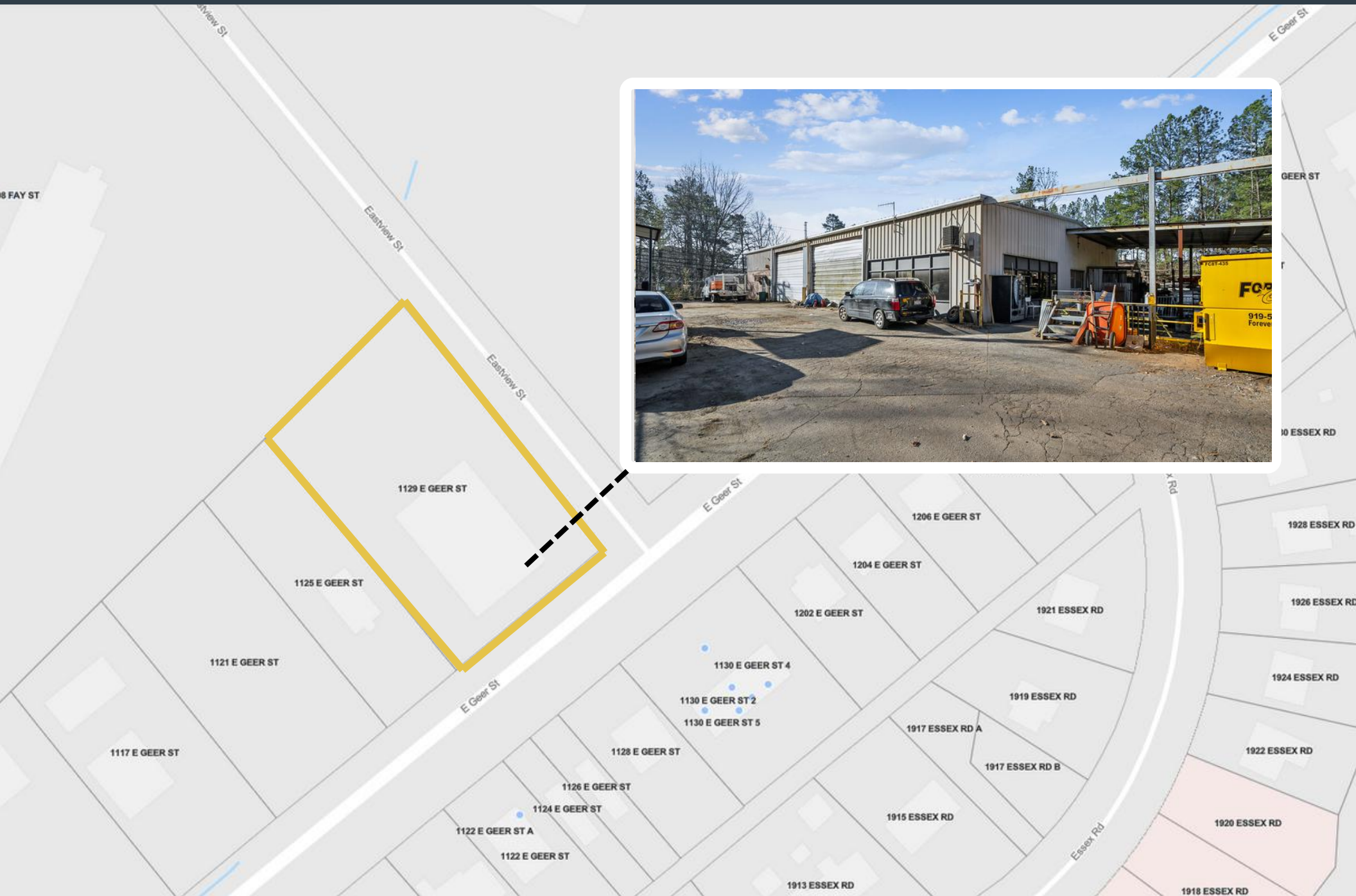


Downtown  
Durham

Centrally located in a well-  
established industrial district



# PARCEL MAP





# MARKET OVERVIEW

1129 E Geer St is situated in Durham, North Carolina, within Durham County. Durham is a prominent city in the Research Triangle region, renowned for its educational institutions, medical centers, and research facilities.

The property is strategically located near key business hubs, notably the Research Triangle Park (RTP), one of the largest research parks in the United States, housing over 300 companies and employing more than 65,000 workers. RTP hosts major corporations such as IBM, Cisco Systems, and GlaxoSmithKline. Additionally, the property is within proximity to The Streets at Southpoint, a major shopping destination offering over 150 stores and dining options. The area is well-connected through public transportation networks like GoDurham and GoTriangle, facilitating easy access to various parts of the city and surrounding regions.

This location offers potential tenants a blend of industrial utility and accessibility to major commercial and research centers, making it a compelling opportunity for businesses seeking a strategic presence in the Durham area.



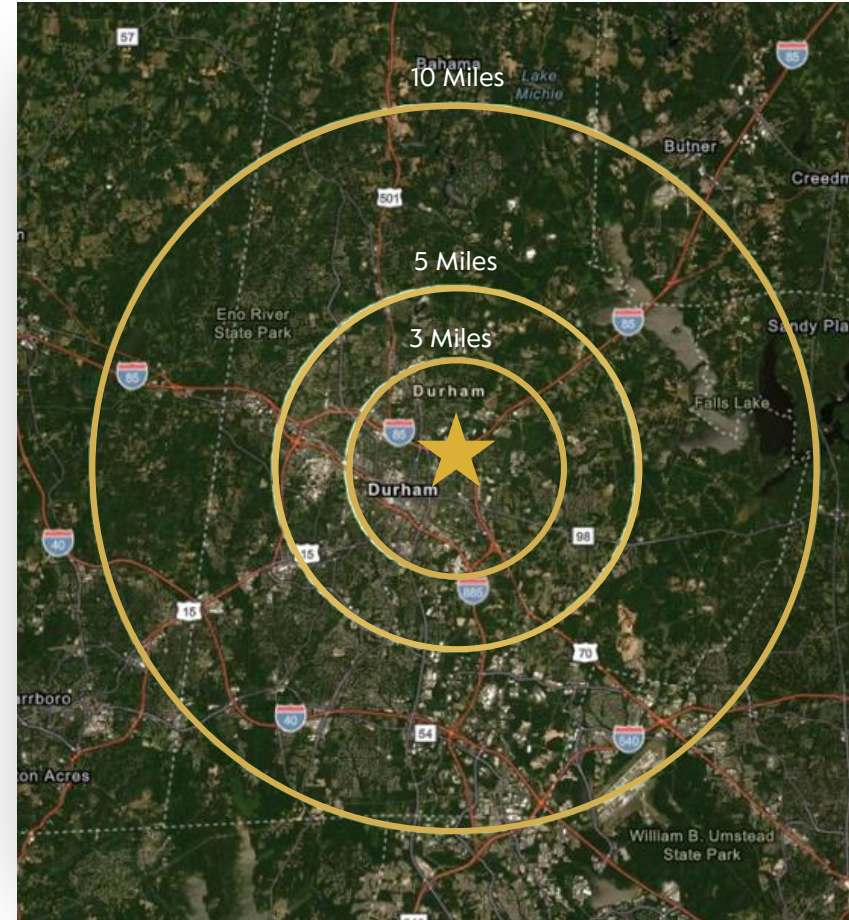


# SURROUNDING DEMOGRAPHICS

POPULATION	3 Miles	5 Miles	10 Miles
2020 POPULATION	79,431	171,629	364,931
2024 POPULATION	85,250	180,772	377,156
ANNUAL GROWTH 2020-2024	1.78%	1.33%	0.84%
ANNUAL GROWTH 2024-2029	1.03%	0.94%	0.84%
MEDIAN AGE	34.5	34.7	37.1

HOUSEHOLDS	3 Miles	5 Miles	10 Miles
2020 HOUSEHOLDS	31,114	68,224	152,570
2024 HOUSEHOLDS	33,345	71,521	157,152
ANNUAL GROWTH 2020-2024	1.79%	1.21%	0.75%
ANNUAL GROWTH 2024-2029	1.4%	1.4%	1.5%
AVG HOUSEHOLD SIZE	1.09%	1.02%	0.90%

INCOME	3 Miles	5 Miles	10 Miles
AVG HOUSEHOLD INCOME	\$73,881	\$79,750	\$100,524
MEDIAN HOUSEHOLD INCOME	\$52,115	\$56,089	\$74,761



HOUSING	3 Miles	5 Miles	10 Miles
MEDIAN HOME VALUE	\$254,786	\$274,382	\$328,399
MEDIAN YEAR BUILT	1976	1984	1993



# CONFIDENTIALITY DISCLAIMER

The information contained in this Offering Memorandum is proprietary and strictly confidential. It is intended to be reviewed only by the party(ies) receiving it from CityPlat, LLC and should not be made available to any other person or entity without the written consent of CityPlat, LLC. If you are not the intended recipient, you are hereby notified that any retention, dissemination, duplication, forwarding, copying or taking any action in reliance on the contents of this information is strictly prohibited. If you receive this Offering Memorandum in error, whether in electronic or printed form, please notify the sender and destroy the document. This Offering has been prepared to provide a summary of unverified information to prospective purchasers, and to establish only a preliminary level of interest in the subject property. The information contained herein is not a substitute for a thorough due diligence investigation.

CityPlat, LLC has not made any investigation, and makes no warranty or representation, with respect to the income or expenses for the subject property, the future projected financial performance of the property, the size and square footage of the property and improvements, the presence or absence of contaminating substances, PCB's or asbestos, the compliance with state and federal regulations, the physical condition of the improvements thereon, or the financial condition or business prospects of any tenant, or any tenant's plans or intentions to continue its occupancy of the subject property. The information contained in this Offering has been obtained from sources we believe are reliable; however, CityPlat, LLC has not verified, and will not verify, any of the information contained herein, nor has CityPlat, LLC conducted any investigation regarding these matters and makes no warranty or representation whatsoever regarding the accuracy or completeness of the information provided.





# CITYPLAT

---

COMMERICAL REAL ESTATE



**NICK MELFI**

Broker

908.255.9698

[nick@cityplat.com](mailto:nick@cityplat.com)

107 Fayetteville St, Suite 400, Raleigh NC 27601

919.650.2643

[www.cityplat.com](http://www.cityplat.com)

